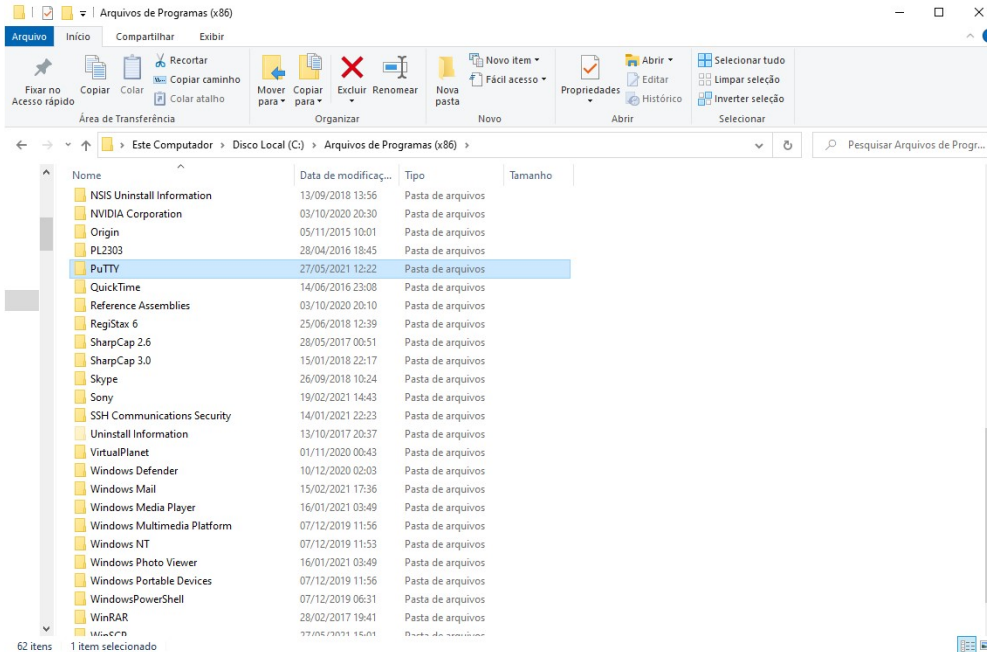


PuTTY

Para aqueles que forem usar o terminal de comando uma instalação do programa PuTTY precisa ser feita na pasta:

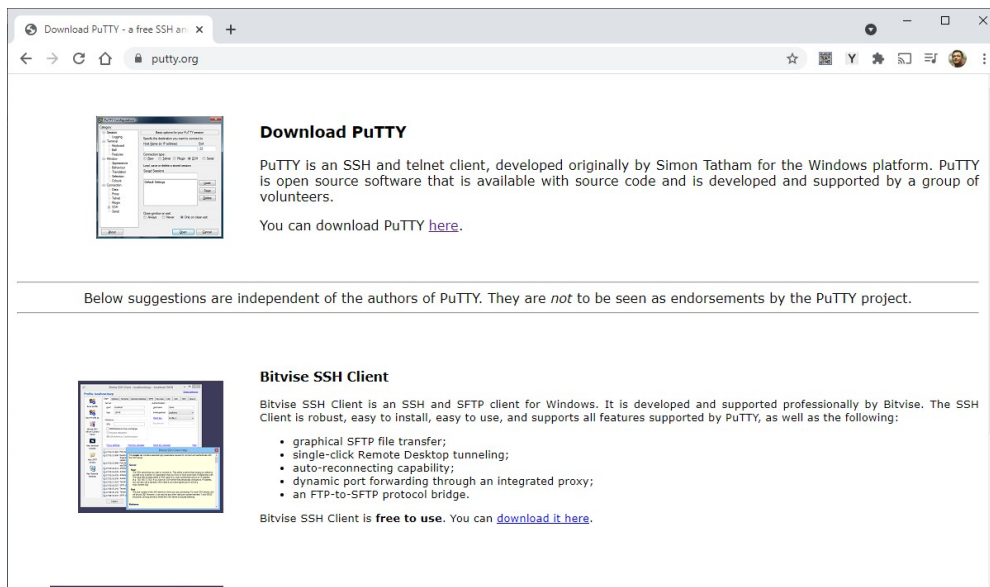
C:\Program Files(x86)\Putty\ [ou Arquivo de Programas (x86)]

Crie a pasta:



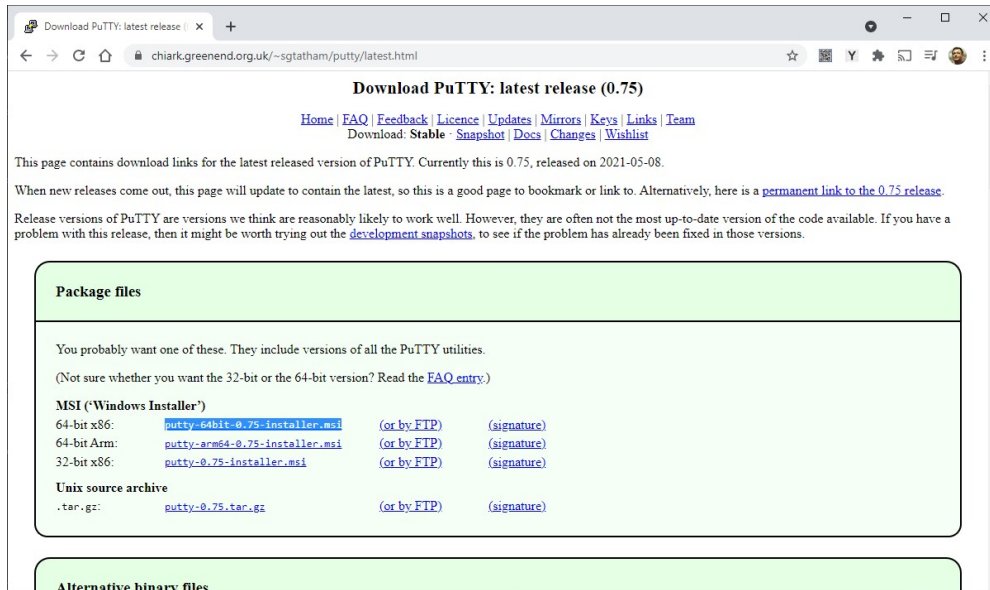
Baixar de:

<https://www.putty.org/>

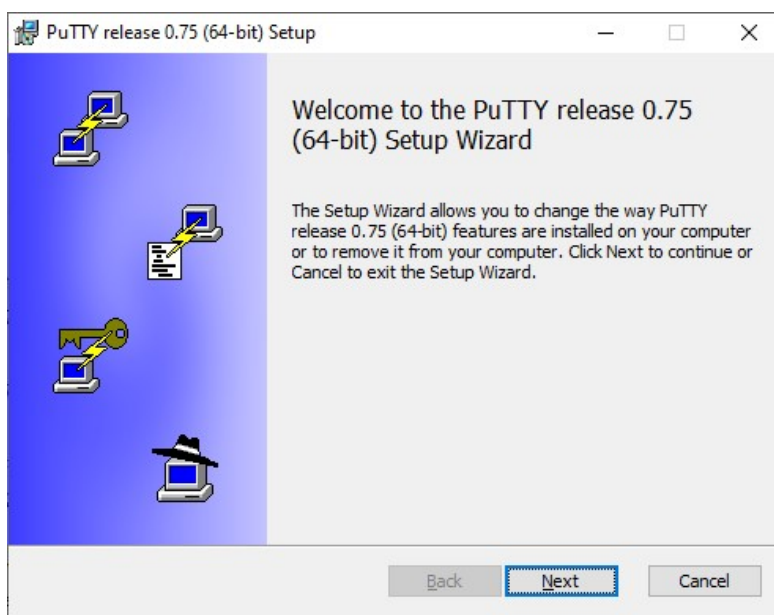
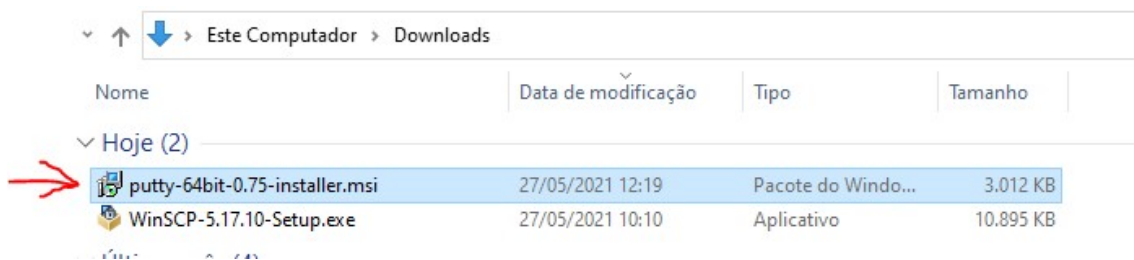


Selecione conforme a versão de seu sistema operacional.

putty-64bit-0.75-installer.msi

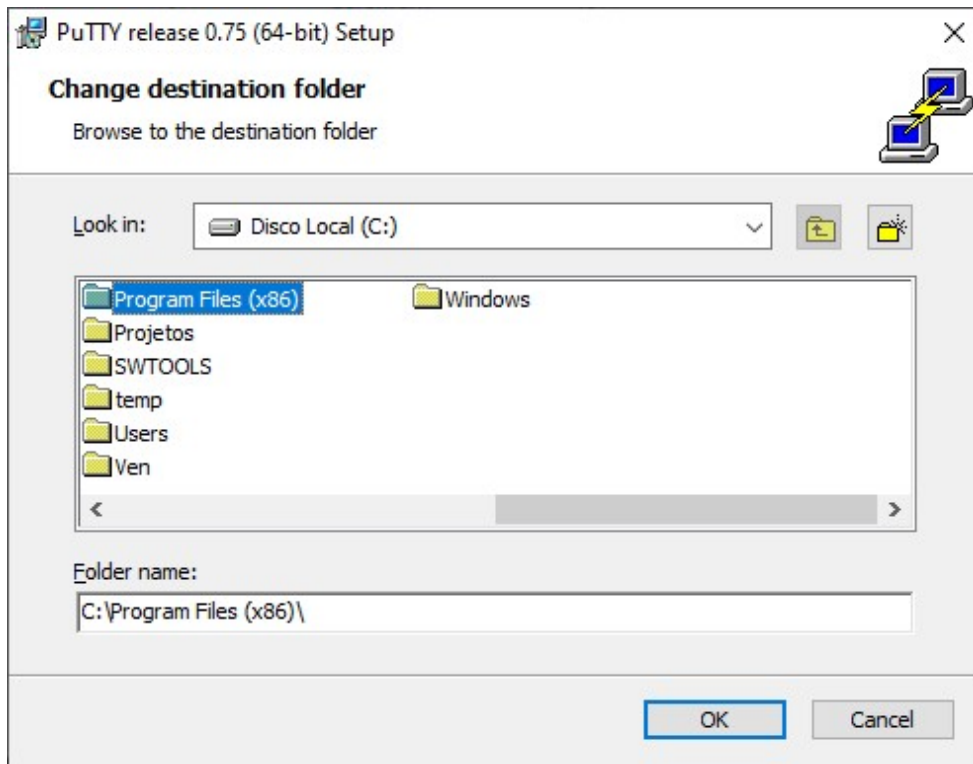


Execute o instalador:

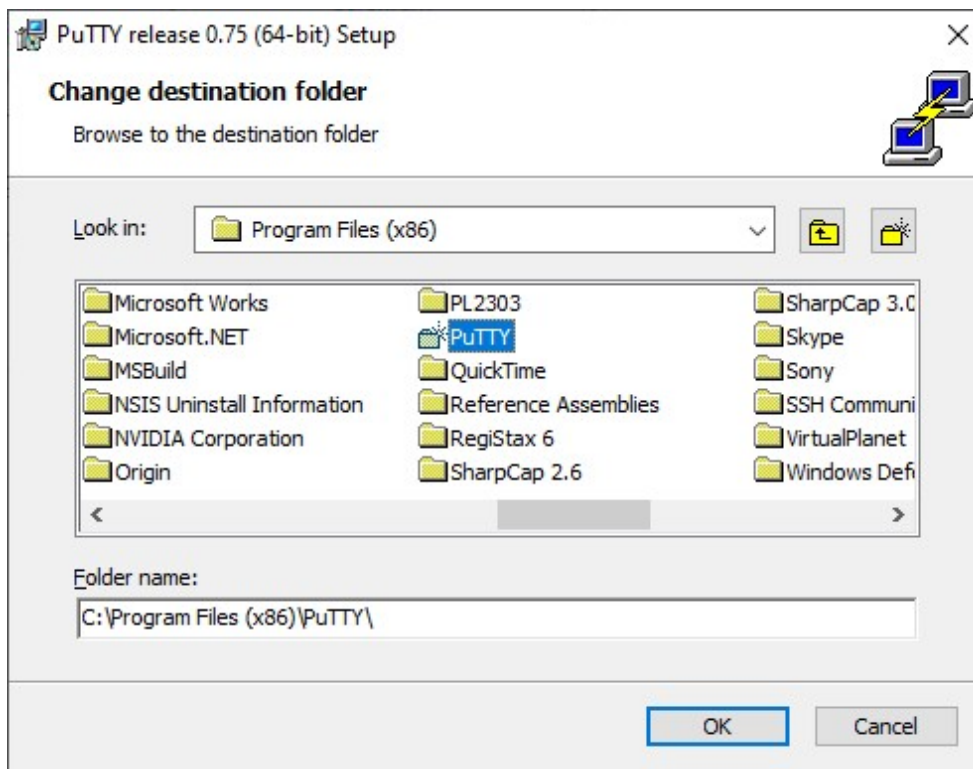


Mude o local da instalação, clicando em [Change]

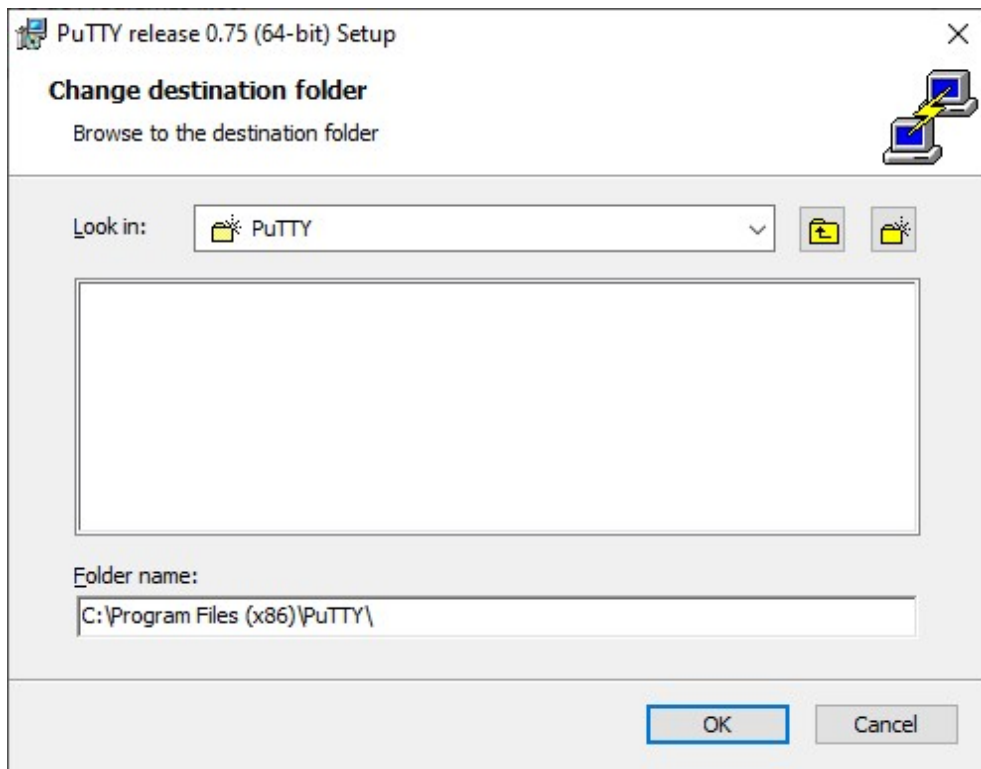
Escolha:



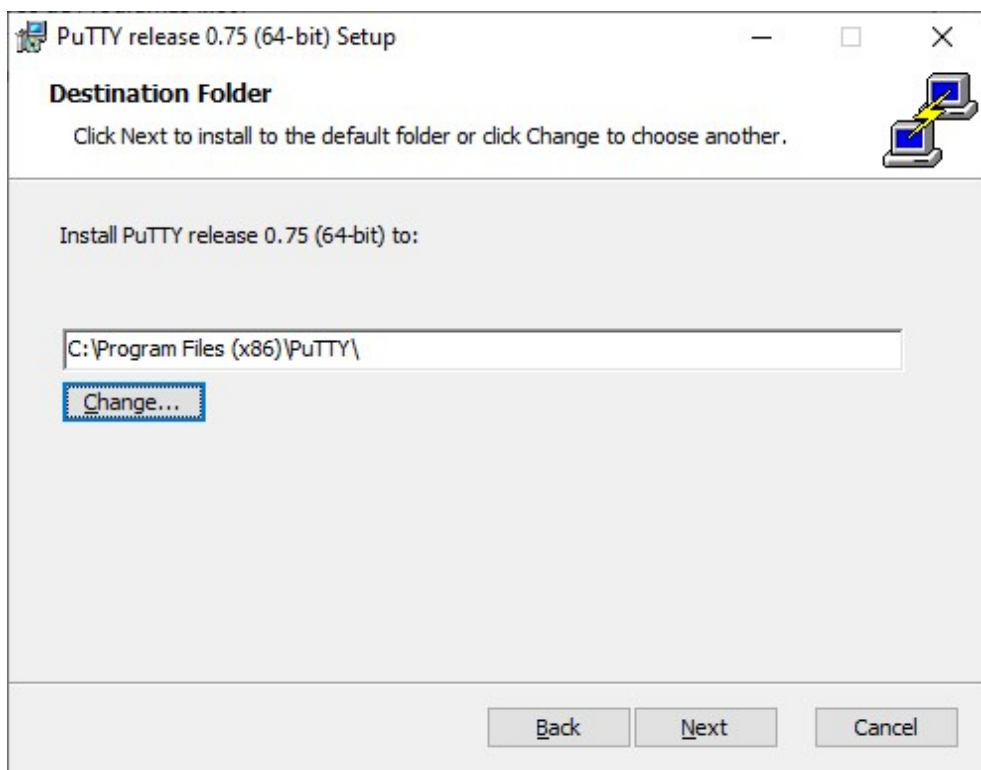
Se a pasta PuTTY não existir, crie:



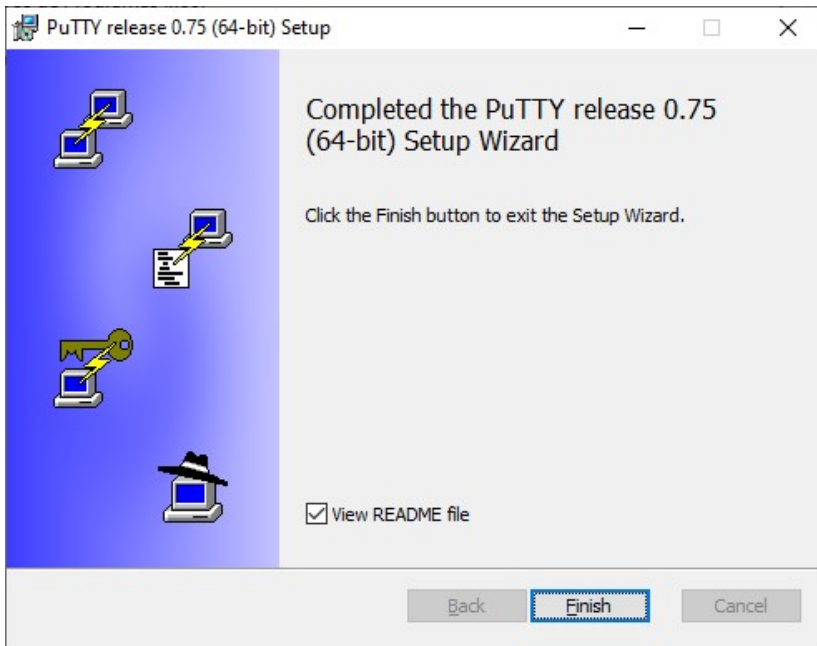
Selecione a nova pasta:



[Next]



Permita que o instalador realize alterações no computador.



Agora ao executar o programa WinSCP e usar a função Putty uma janela de terminal abrirá.

