

Válvulas

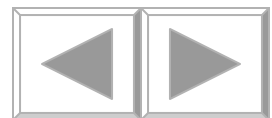
Direcionais

Bloqueio

Pressão

Fluxo

Combinadas



Direcionais

**Simbologia, acionamentos
e identificação**

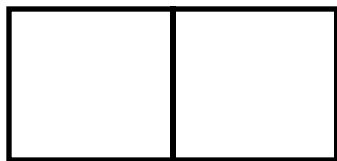
Construção



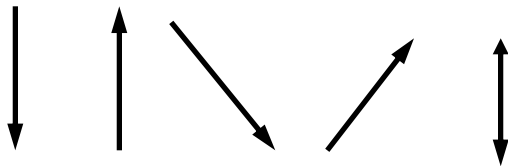
Norma DIN/ISO 1219



Quadrado representa posição



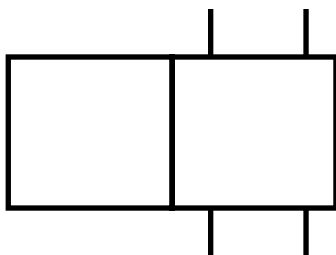
Número de posições da válvula



Setas indicam a direção e sentido do fluxo do ar

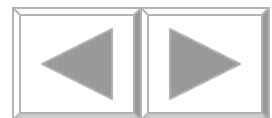


T's representam bloqueios das vias



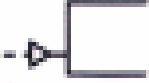









As conexões de entrada e saída serão representadas por traços externos.

O número de traços indica o número de vias.

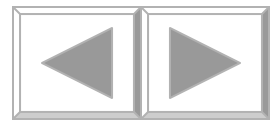
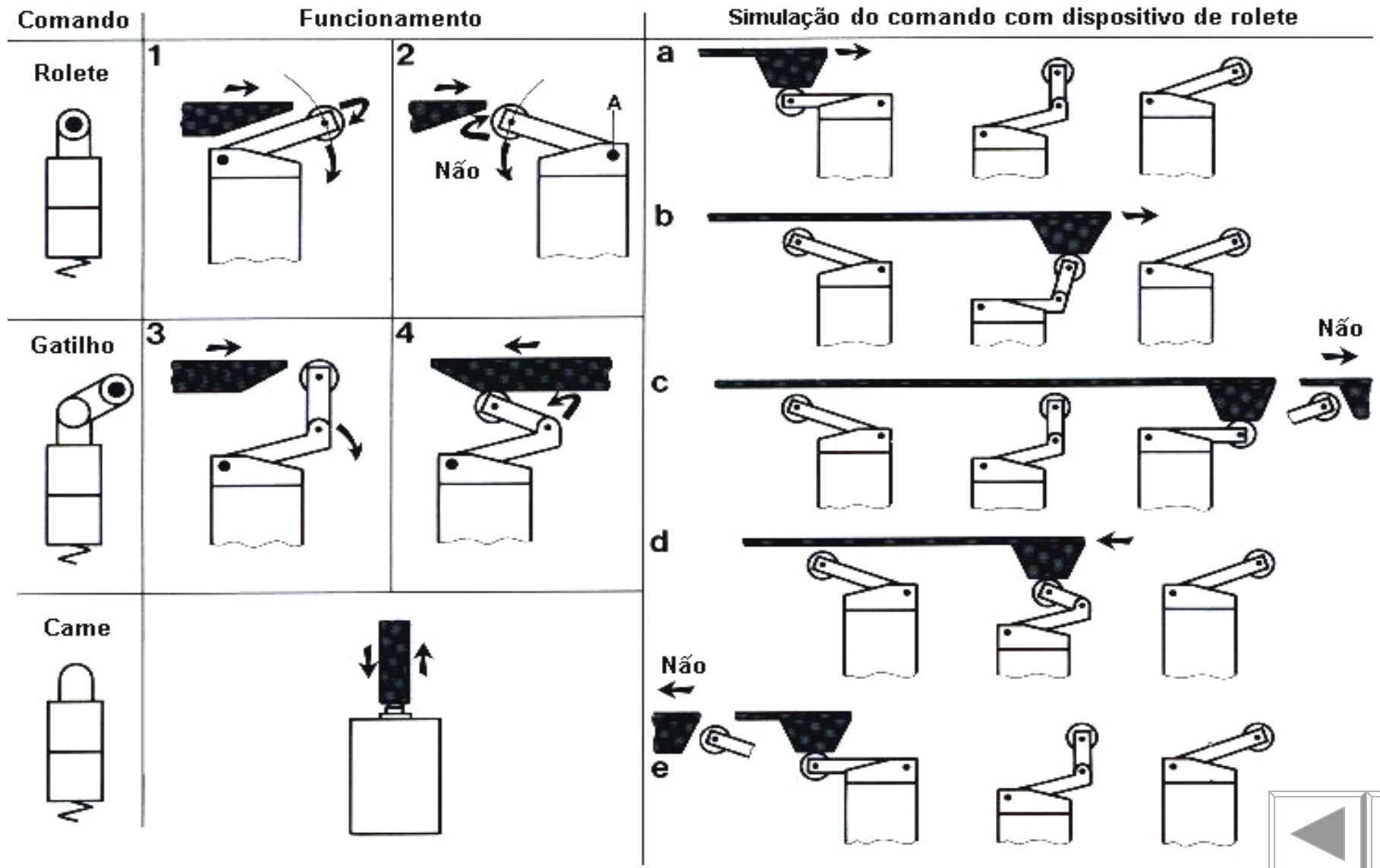


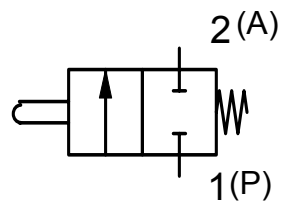
Acionamentos e seus símbolos

	Musculares		Mecânicos		Pneumáticos
Geral		Came		Piloto Positivo	
Botão		Rolete		Decréscimo de pressão	
Alavanca		Gatilho			
Pedal		Mola			

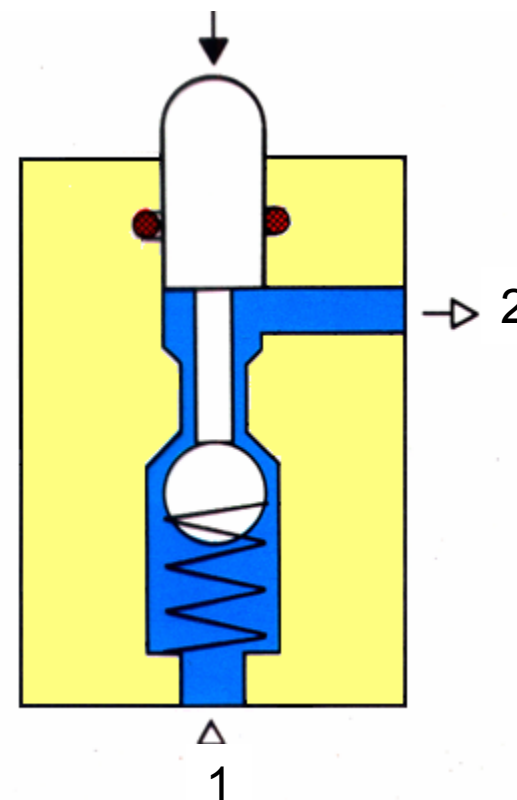
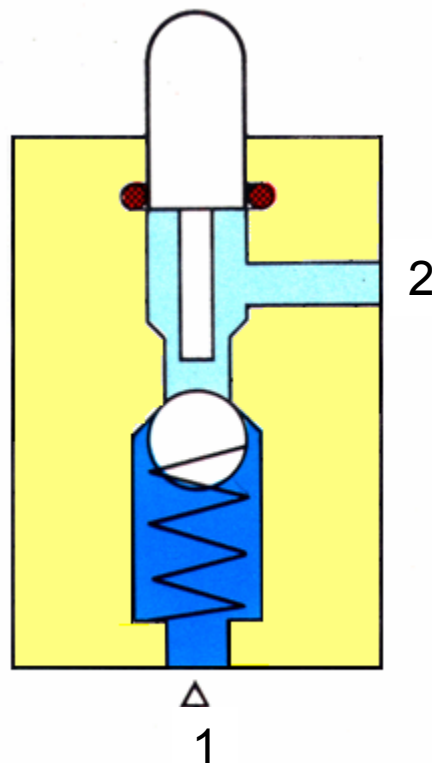


Acionamentos (rolete, gatilho)

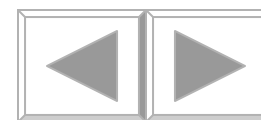


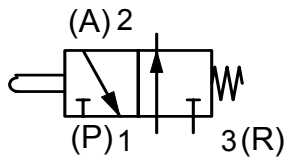


Simbologia

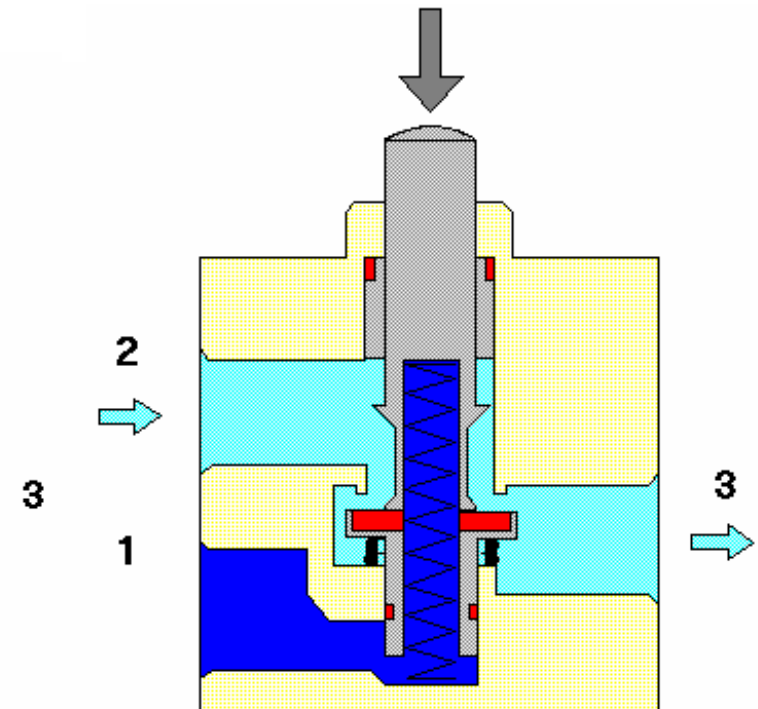
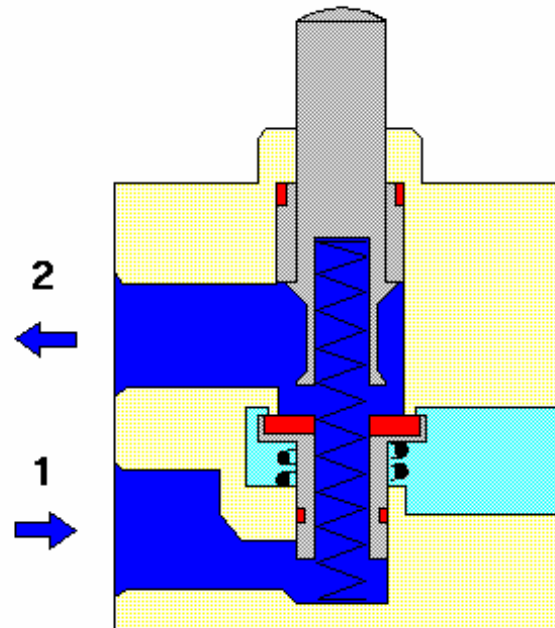
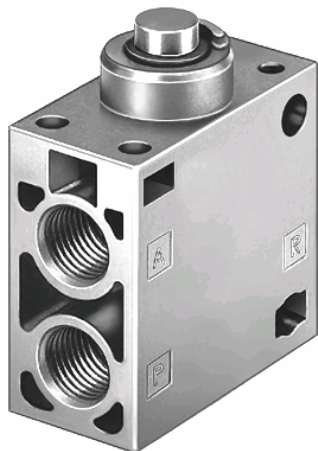


2/2 Vias NF Acionamento por Came Retorno por Mola

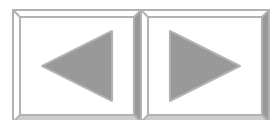


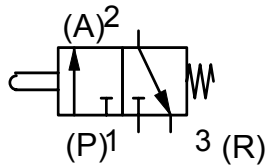


Simbologia

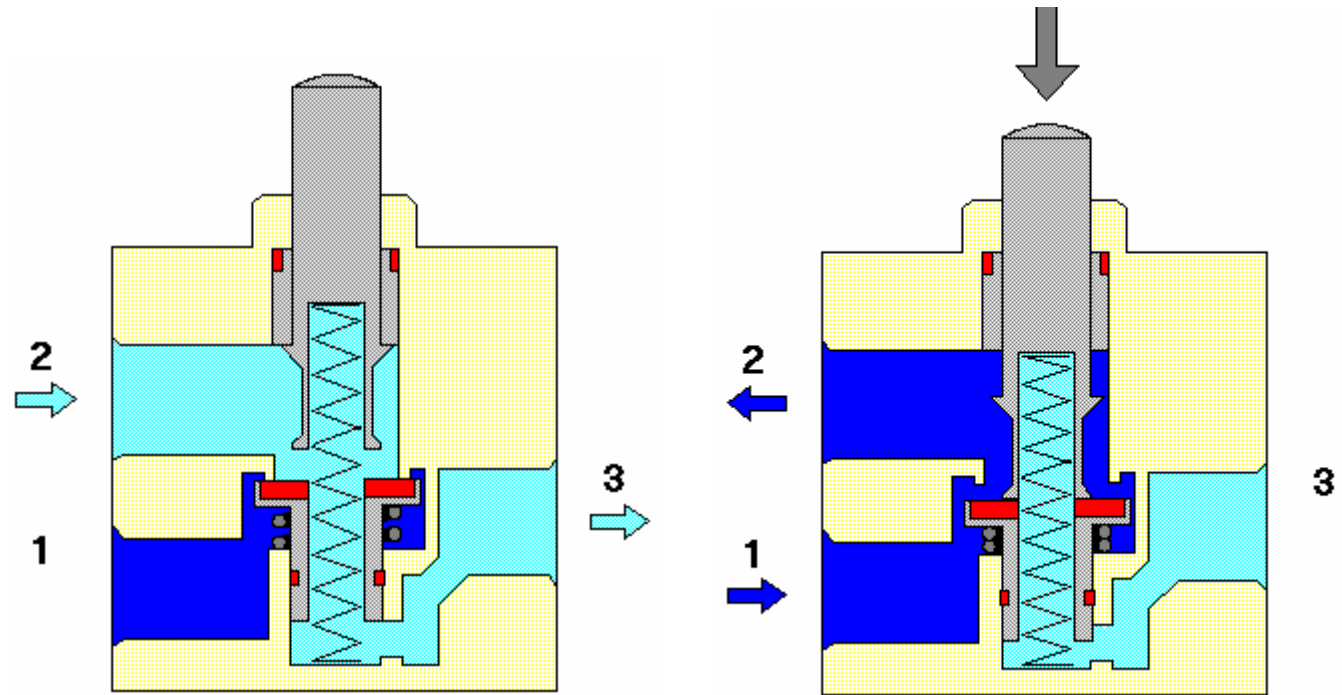
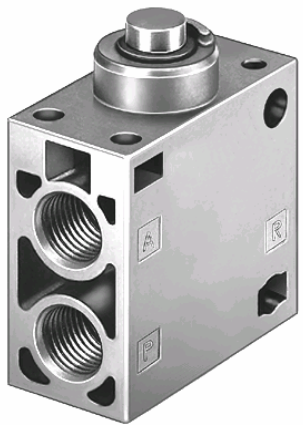


3/2 Vias NA Acionamento por Rolete Retorno por Mola

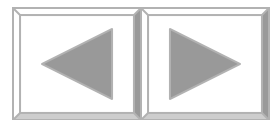


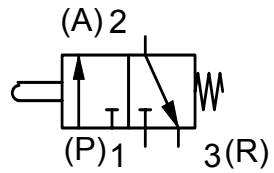


Simbologia

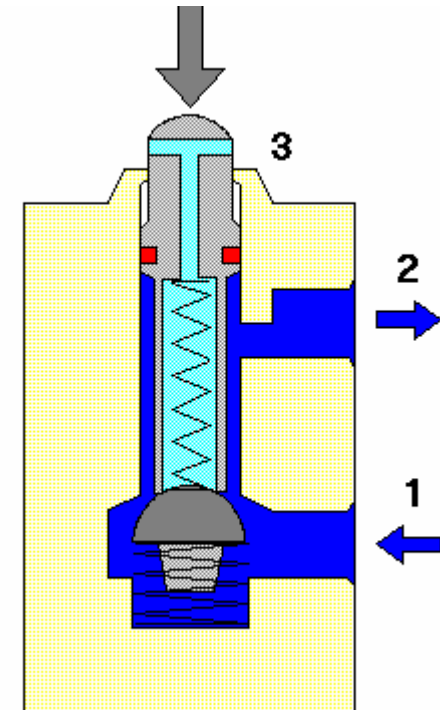
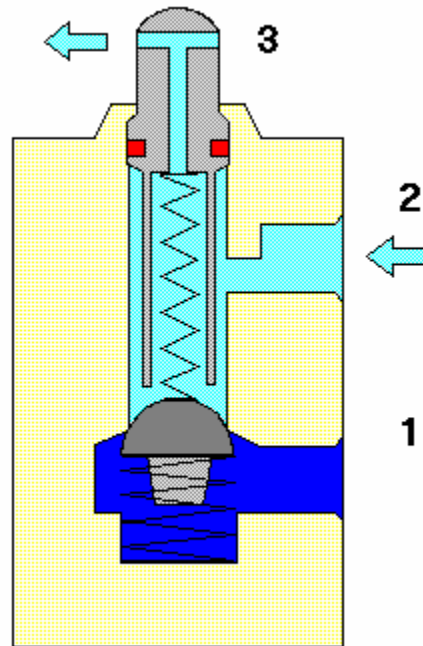
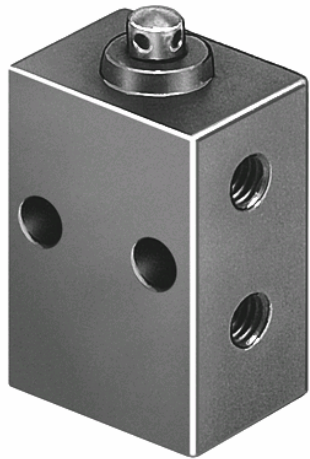


3/2 Vias NF Acionamento por Came Retorno por Mola

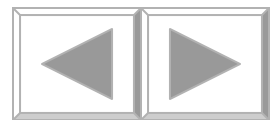


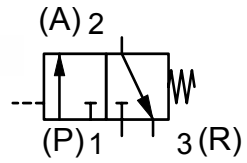


Simbologia

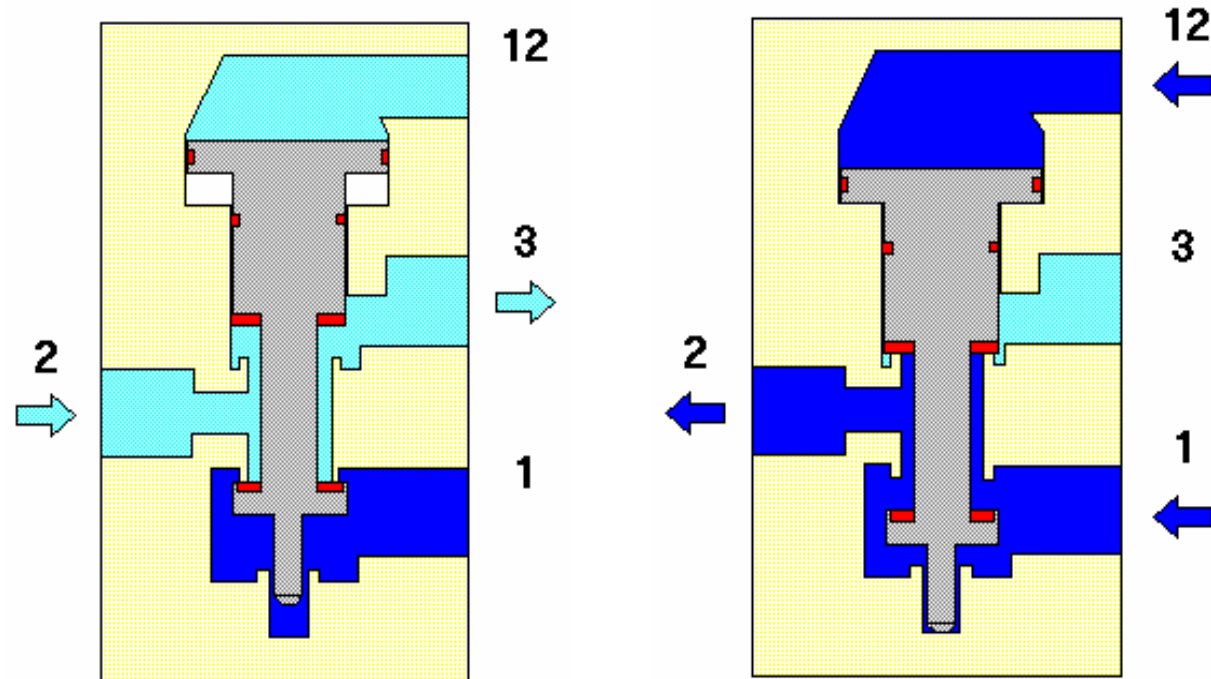


3/2 Vias NF Acionamento por Came Retorno por Mola



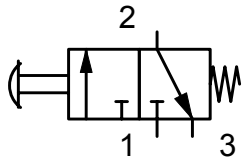


Simbologia

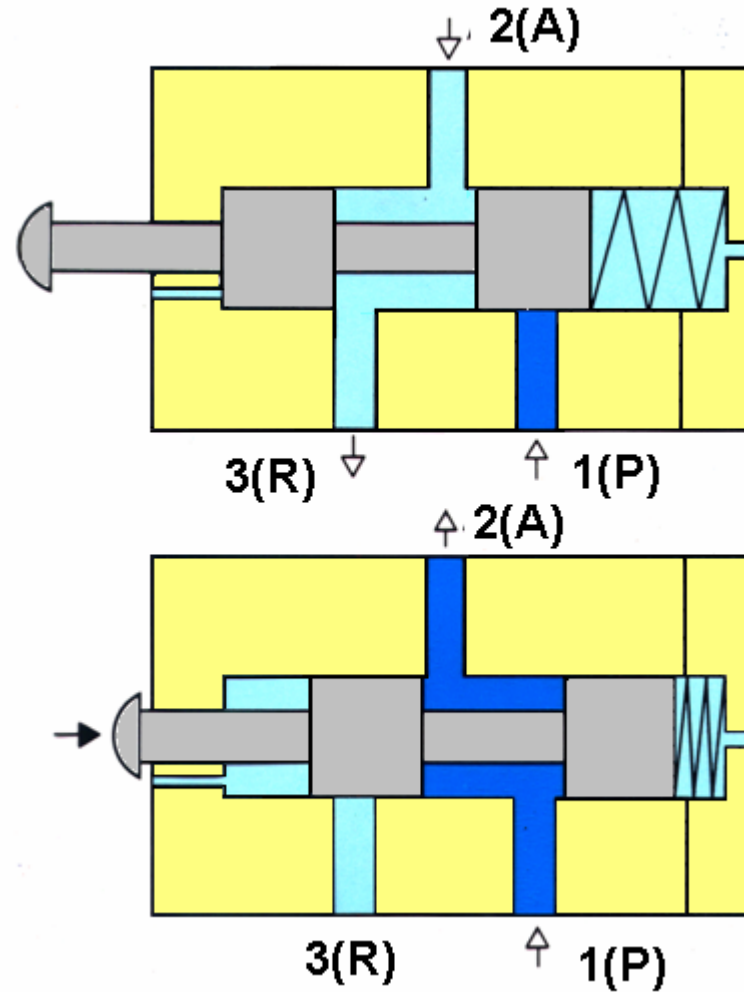


3/2 Vias NF Acionamento por Simples Piloto



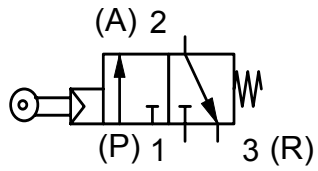


Simbologia

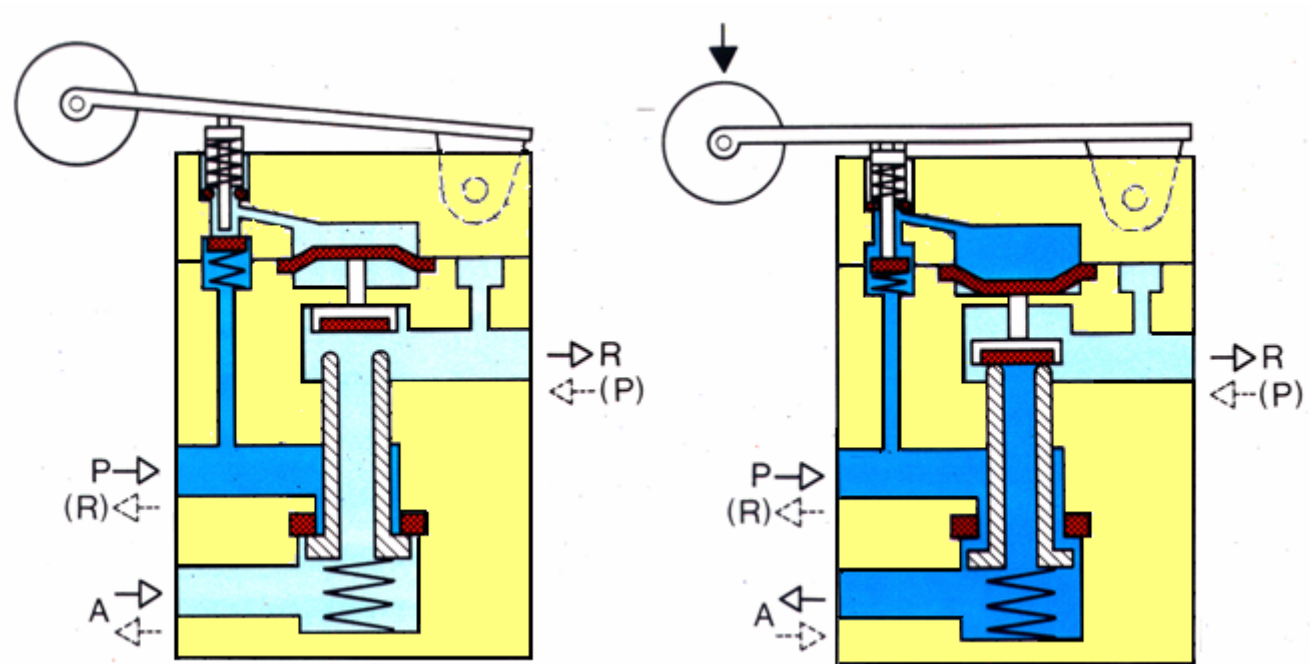
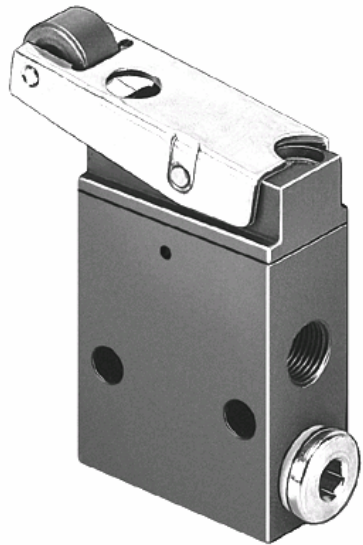


3/2 Vias NF Acionamento por Botão Retorno por Mola

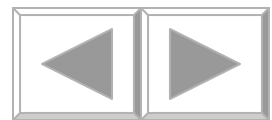


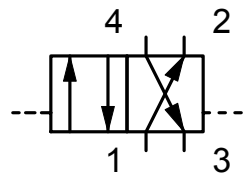


Simbologia

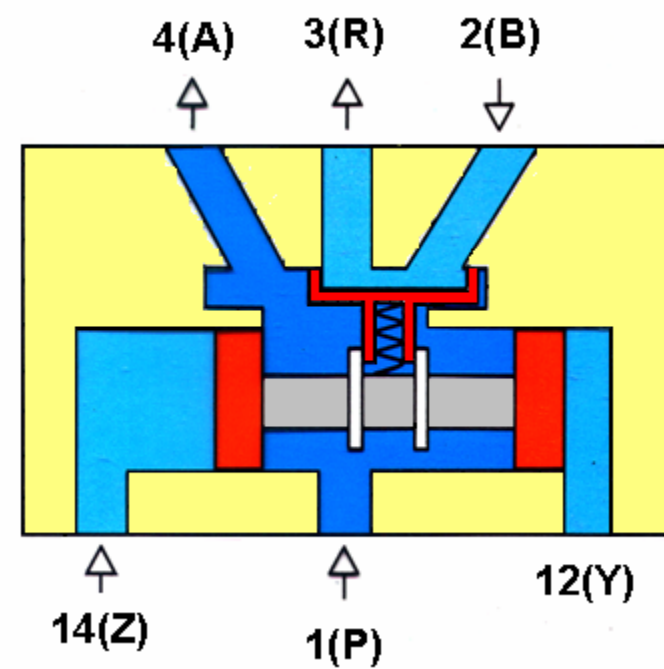
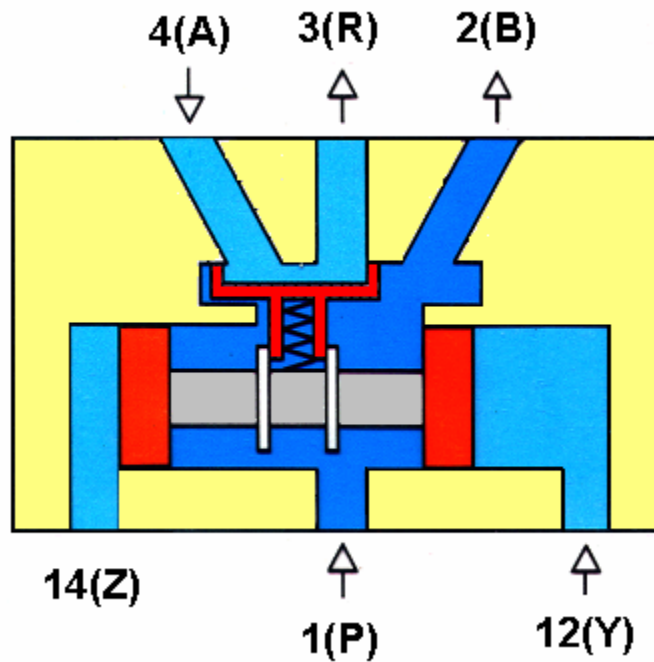


3/2 Vias NF Acionamento por Rolete Servopilotada

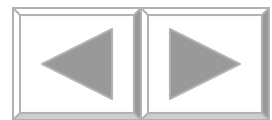




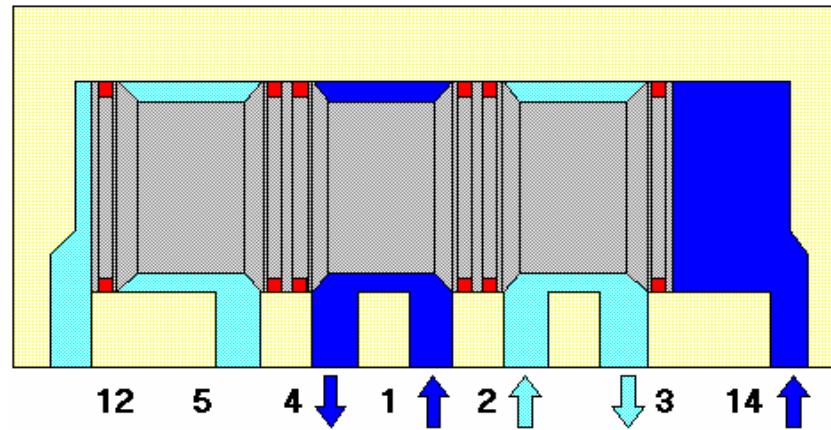
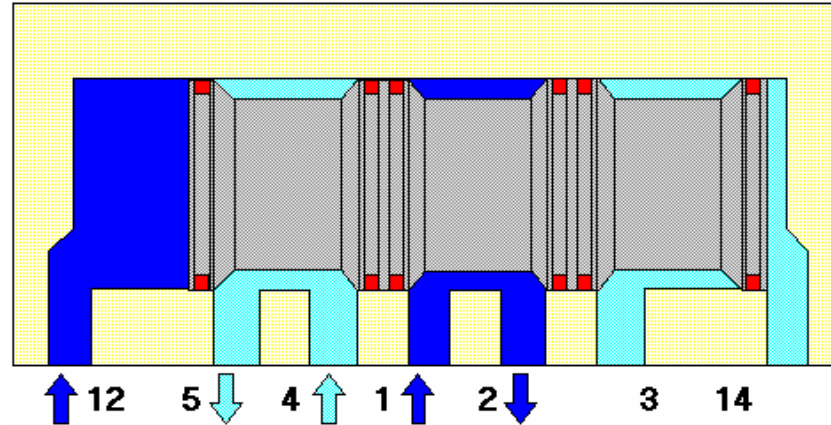
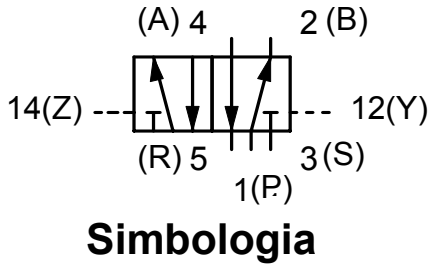
Simbologia



4/2 Vias Acionamento por Duplo Piloto



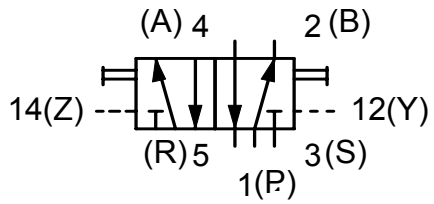
Válvulas Direcionais



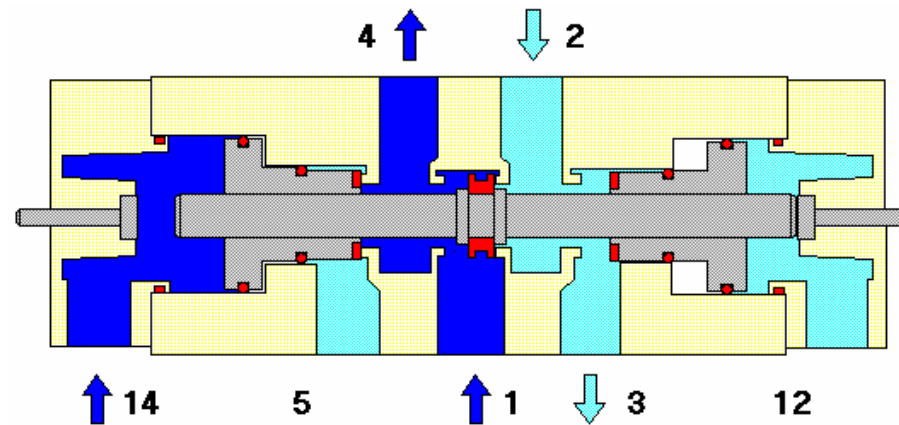
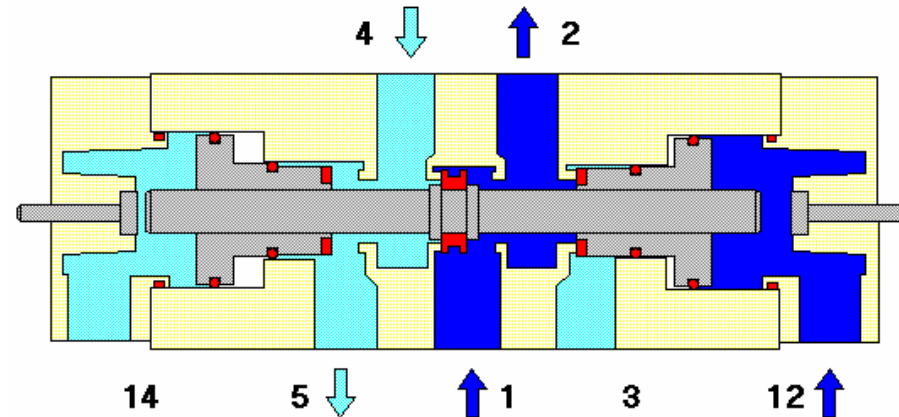
5/2 Vias Acionamento por Duplo Piloto



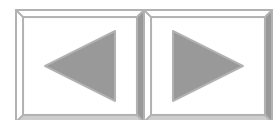
Válvulas Direcionais



Simbologia

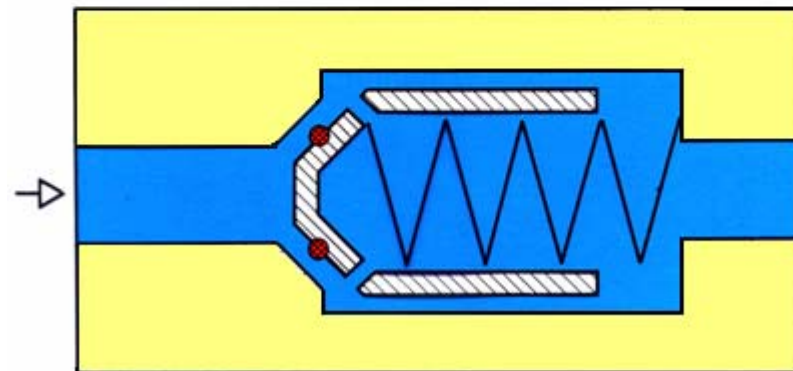
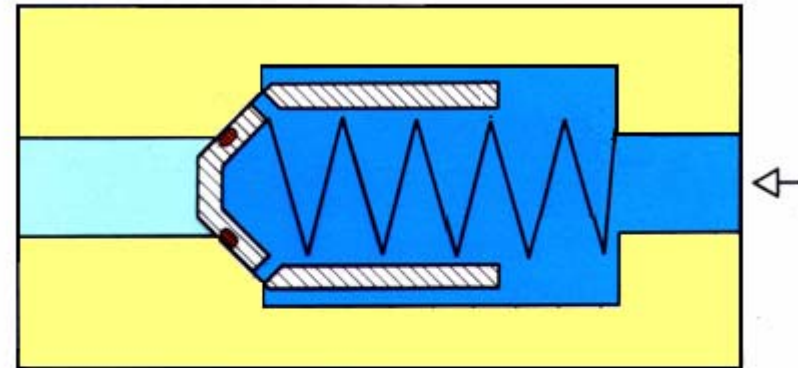


5/2 Vias Acionamento por Duplo Piloto

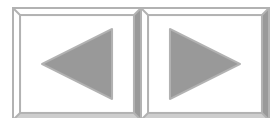




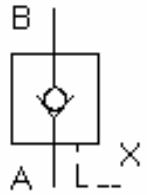
Simbologia



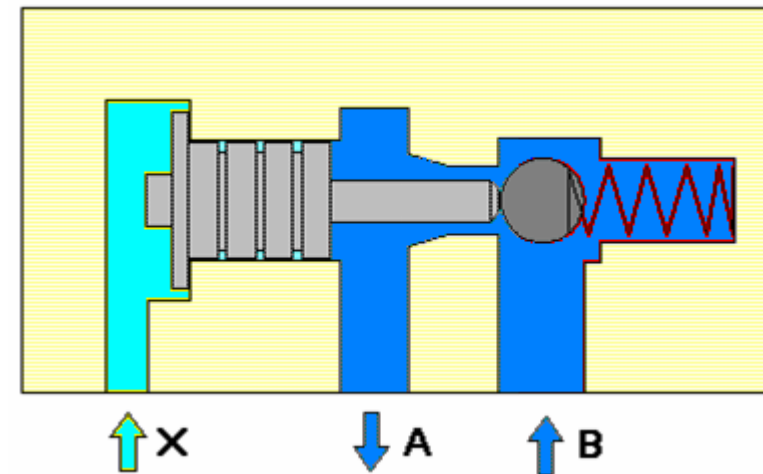
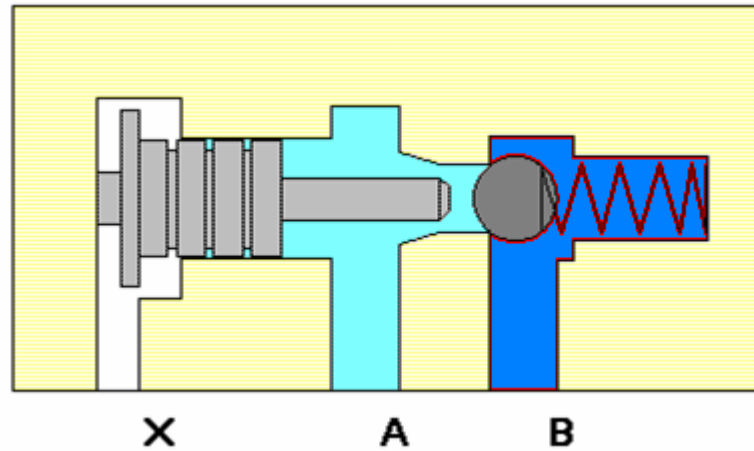
Válvula de Retenção



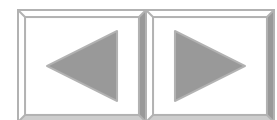
Válvulas de Bloqueio



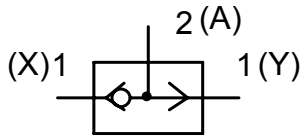
Simbologia



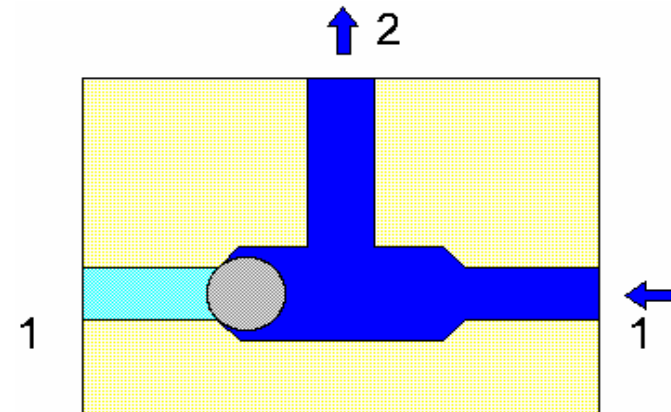
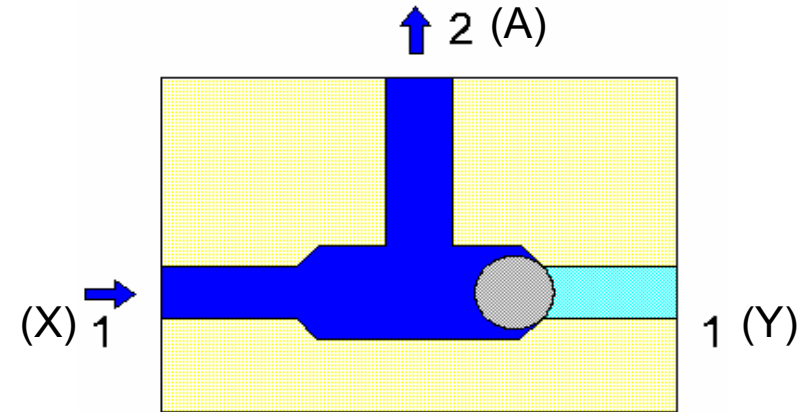
Retenção Pilotada



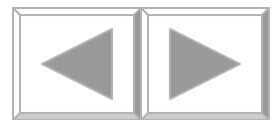
Válvulas de Bloqueio



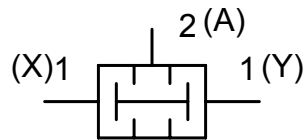
Simbologia



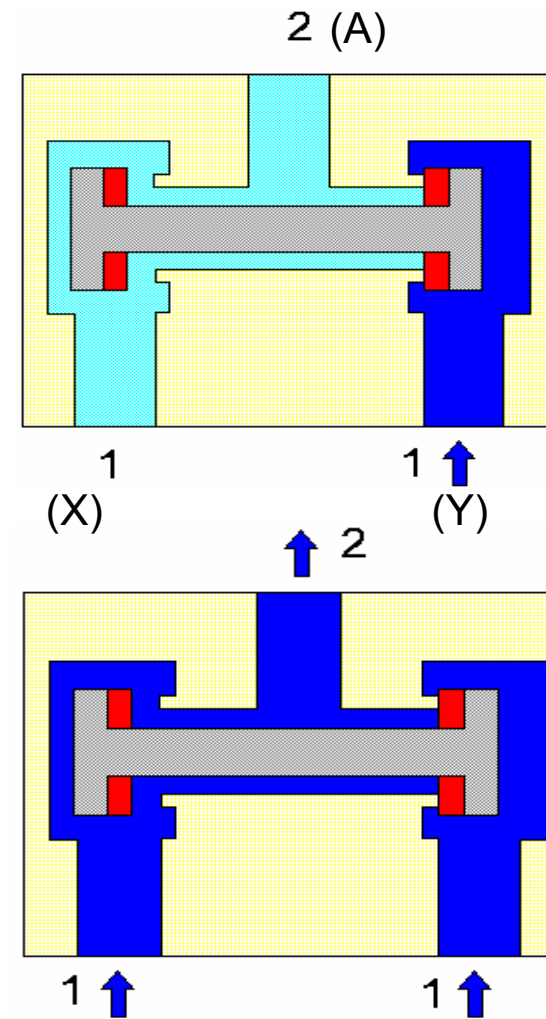
Alternadora (OU)



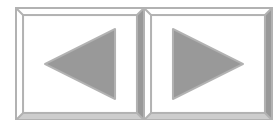
Válvulas de Bloqueio

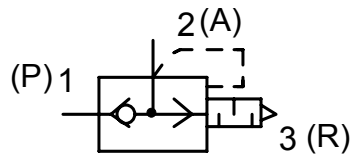


Simbologia

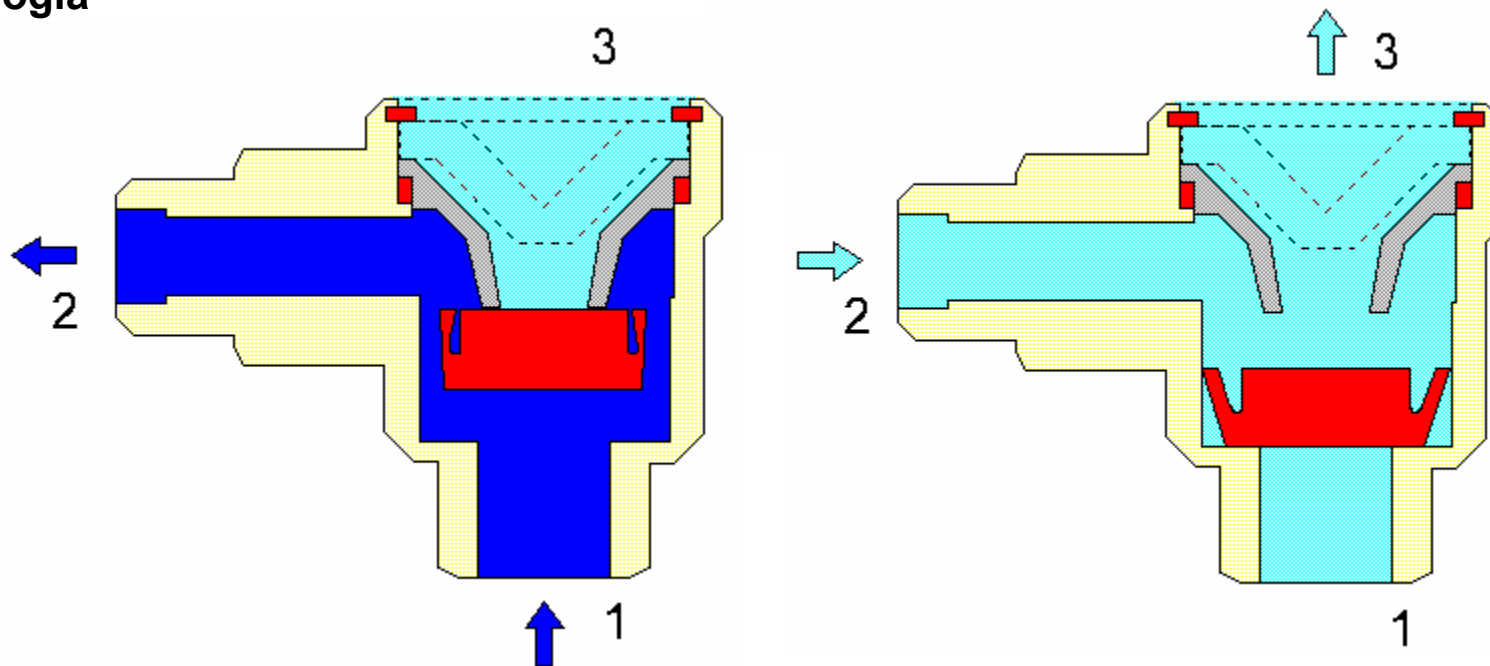


Simultaneidade (E)

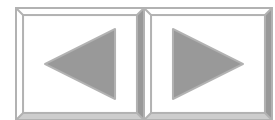




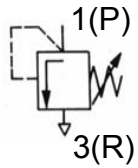
Simbologia



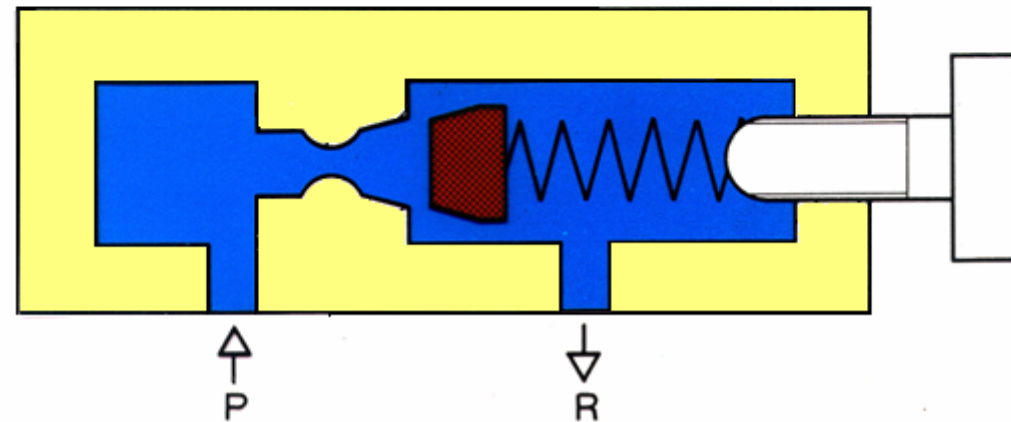
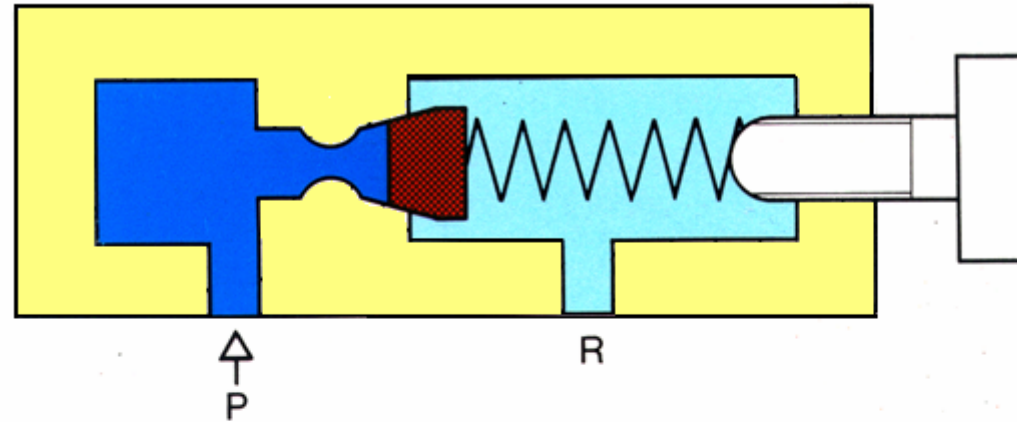
Escape Rápido



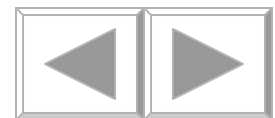
P

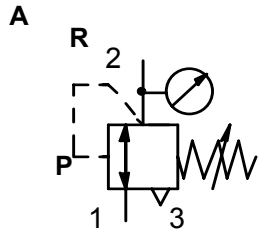


Simbologia

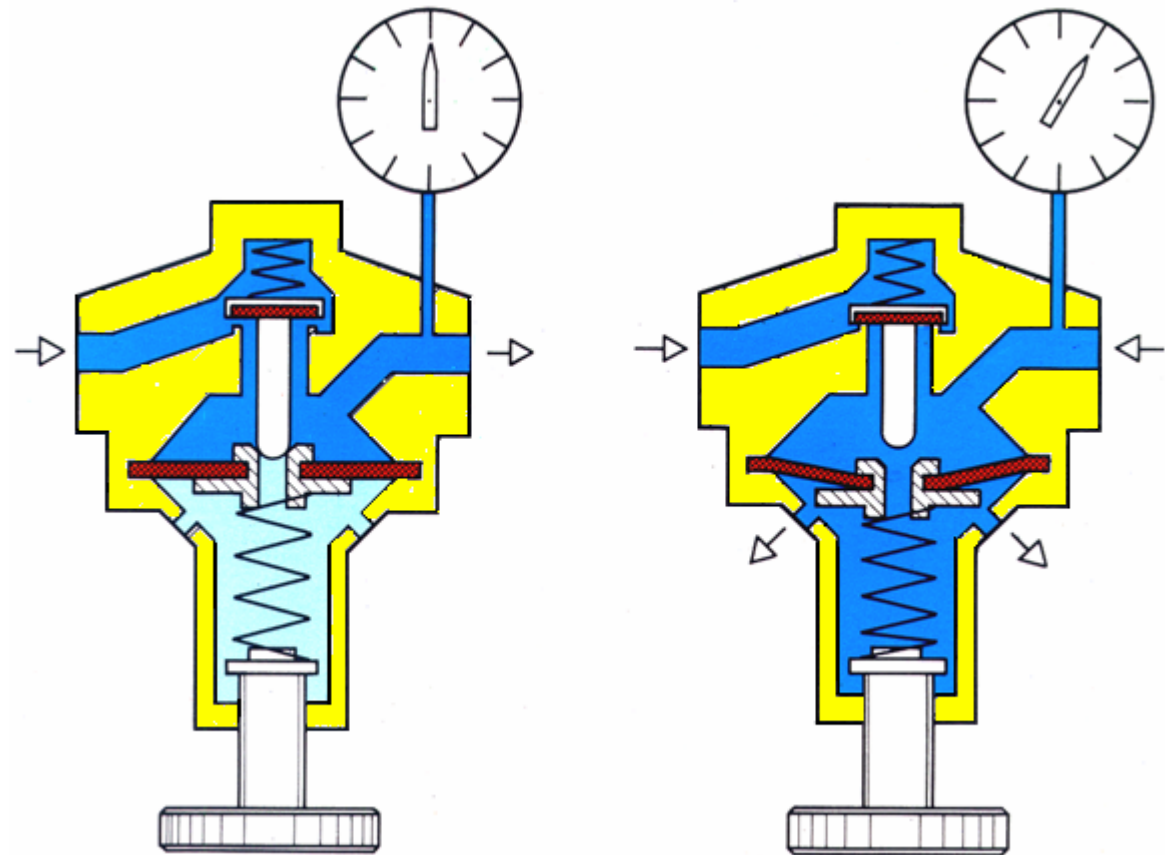


Limitadora de Pressão

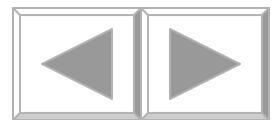




Simbologia

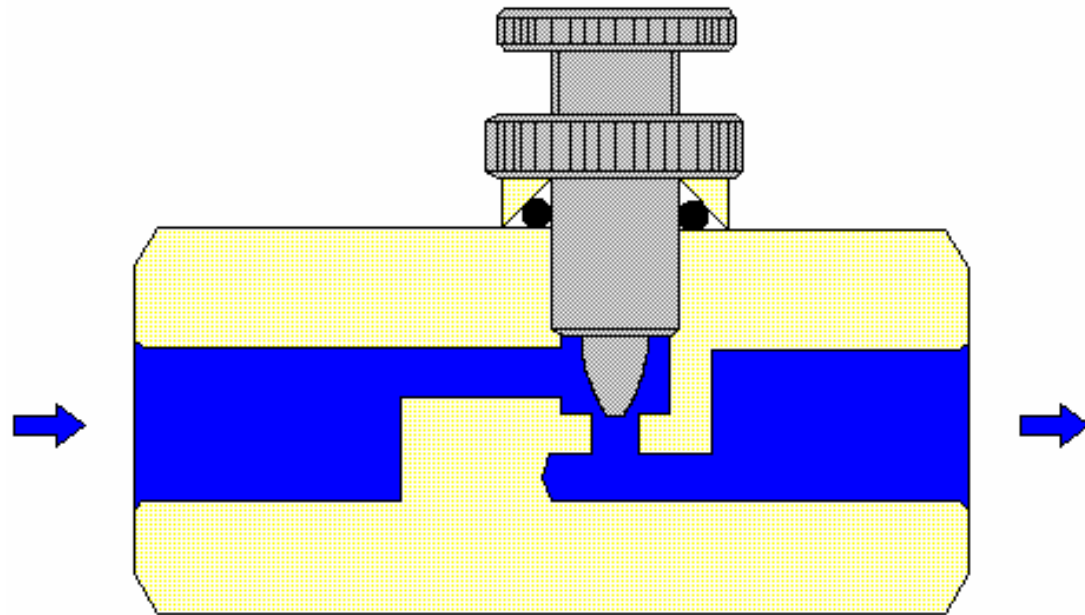
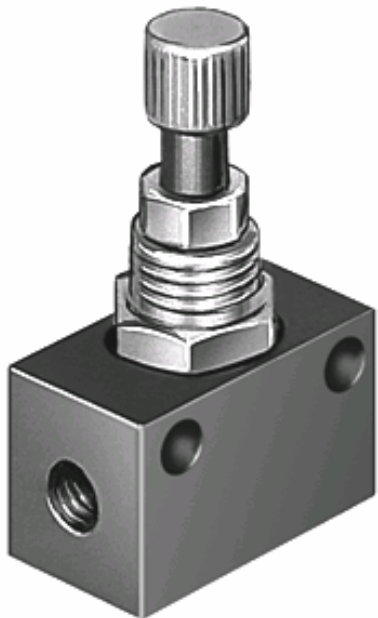


Reguladora de Pressão

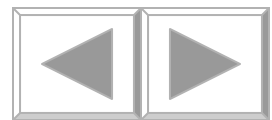


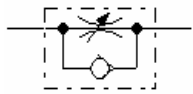


Simbologia

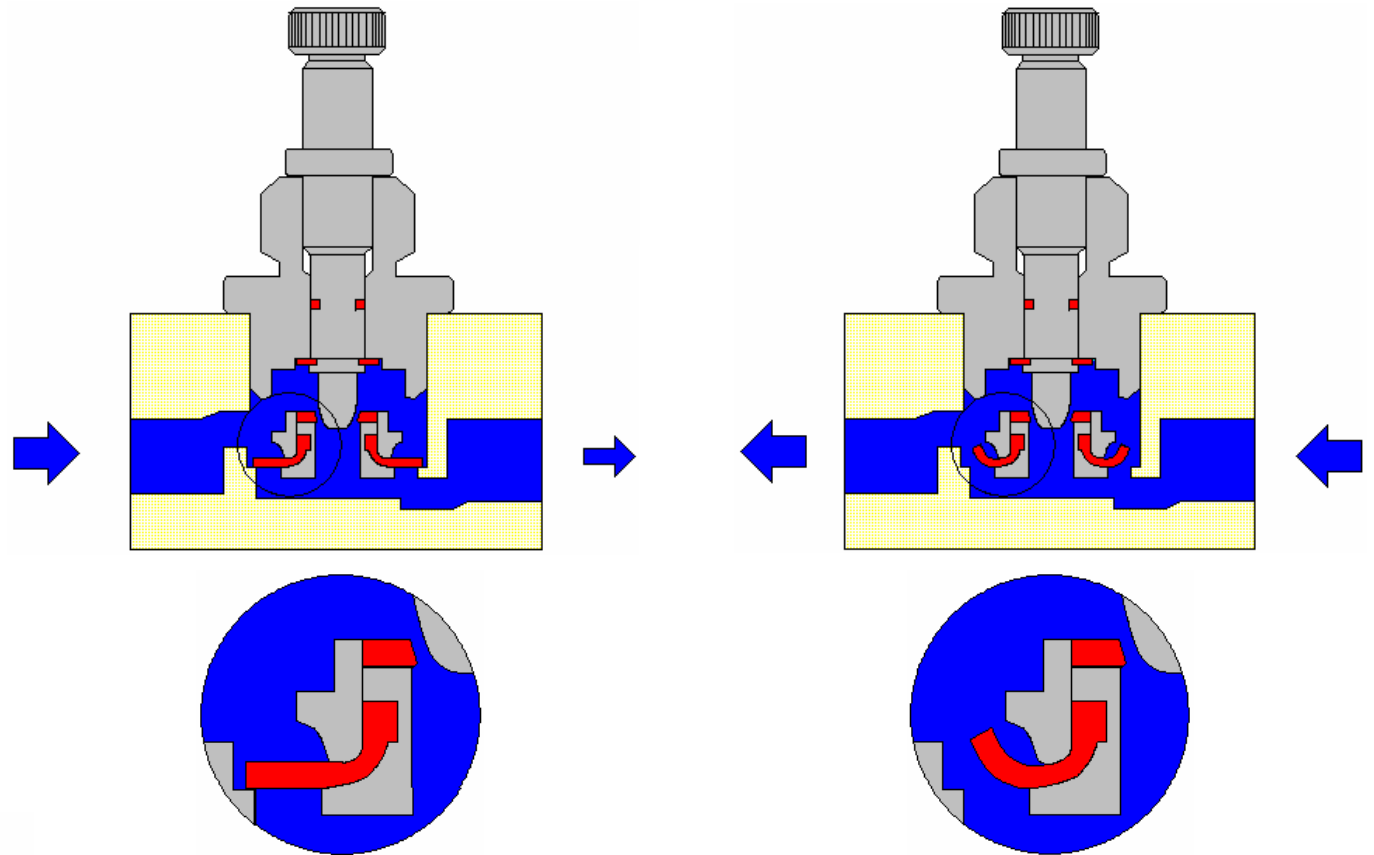


Reguladora de Fluxo Bidirecional

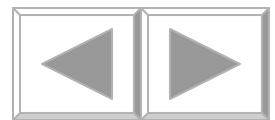


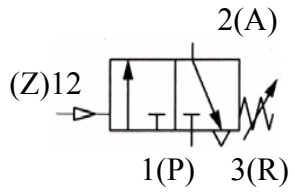


Simbologia

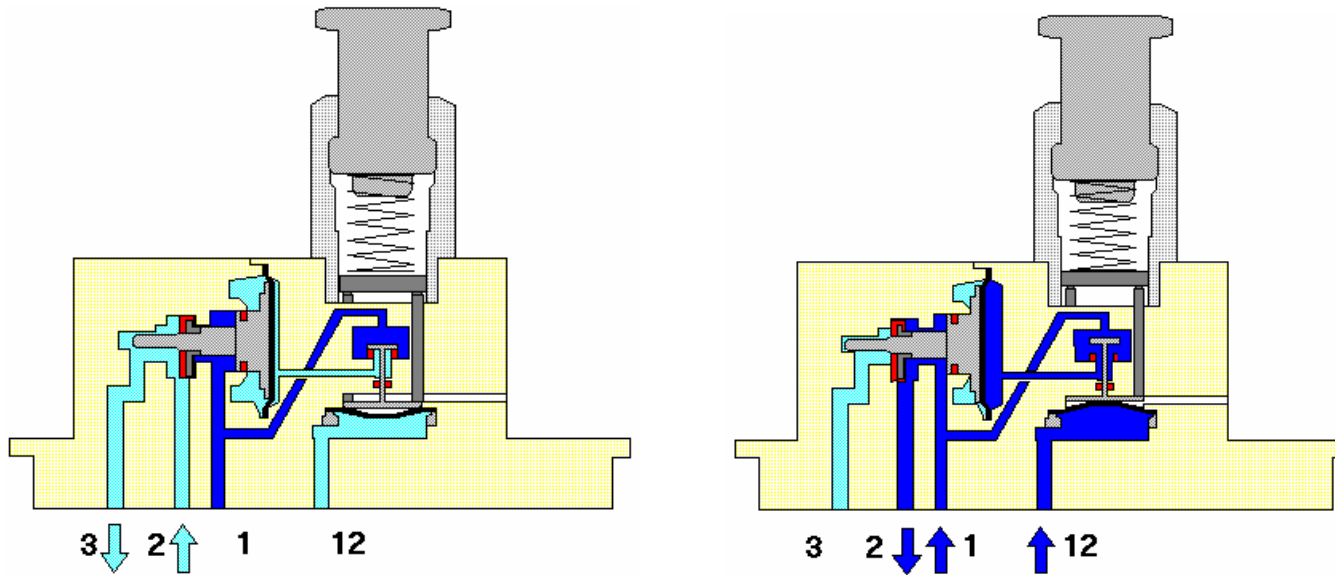
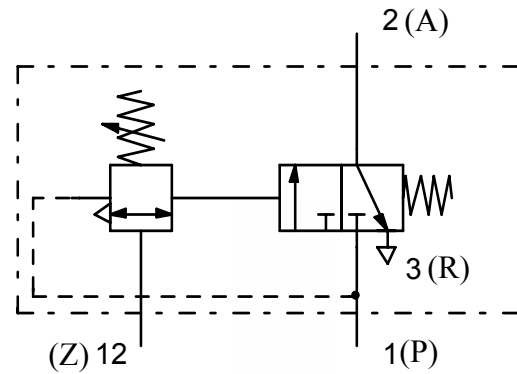


Reguladora de Fluxo Unidirecional

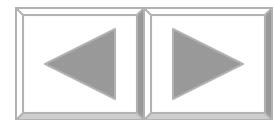


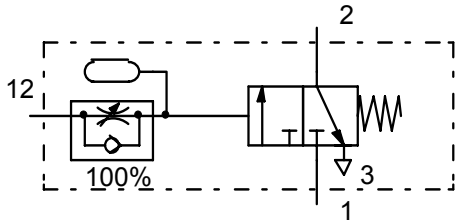


Simbologia

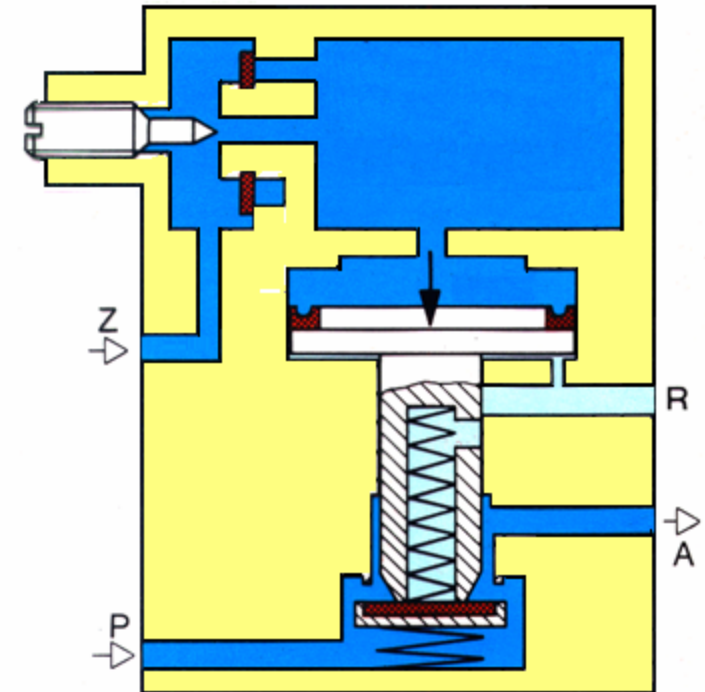
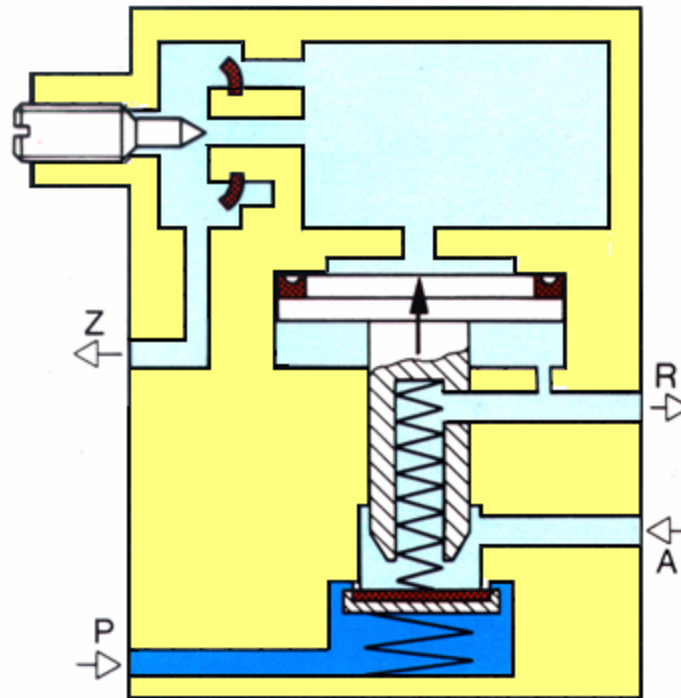
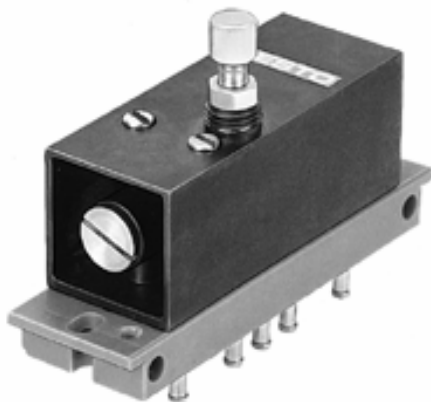


Sequência



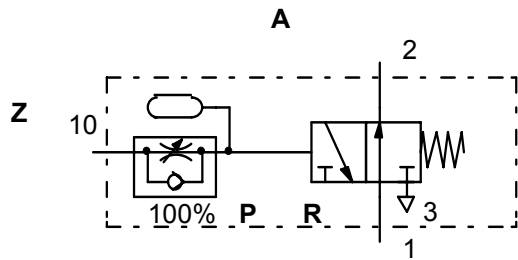


Simbologia

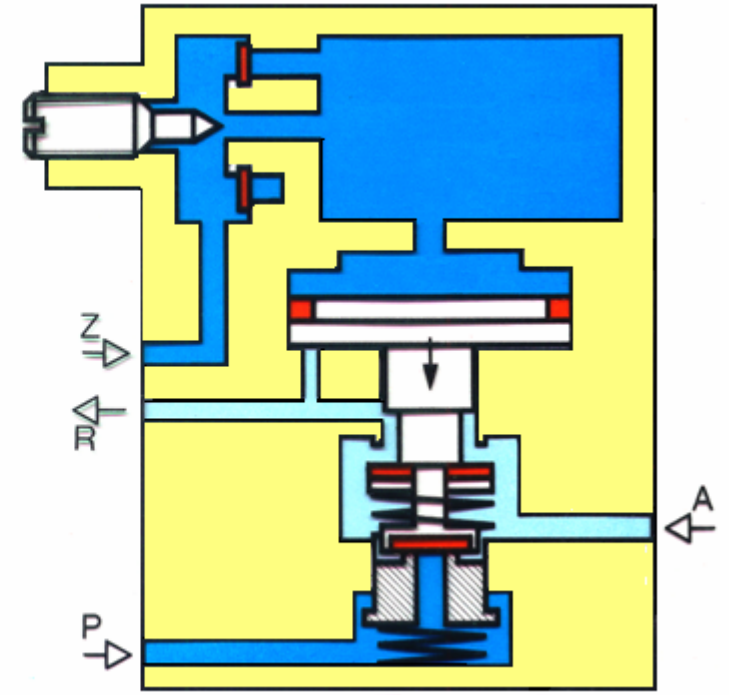
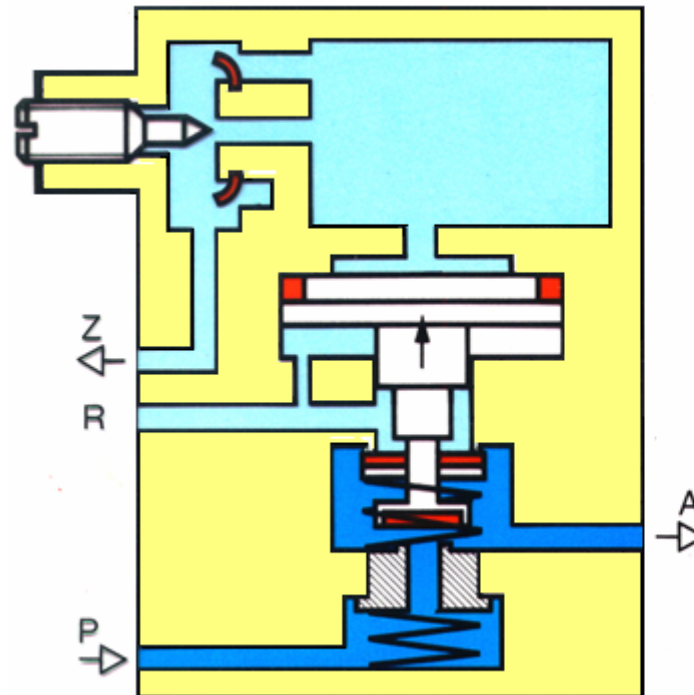
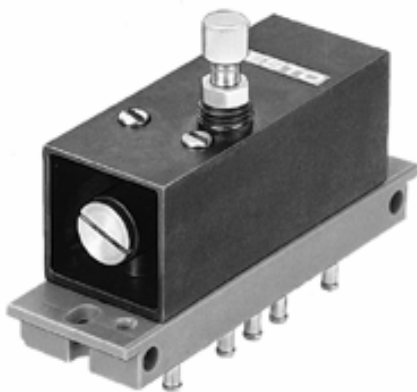


Temporizadora NF

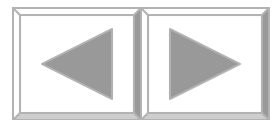


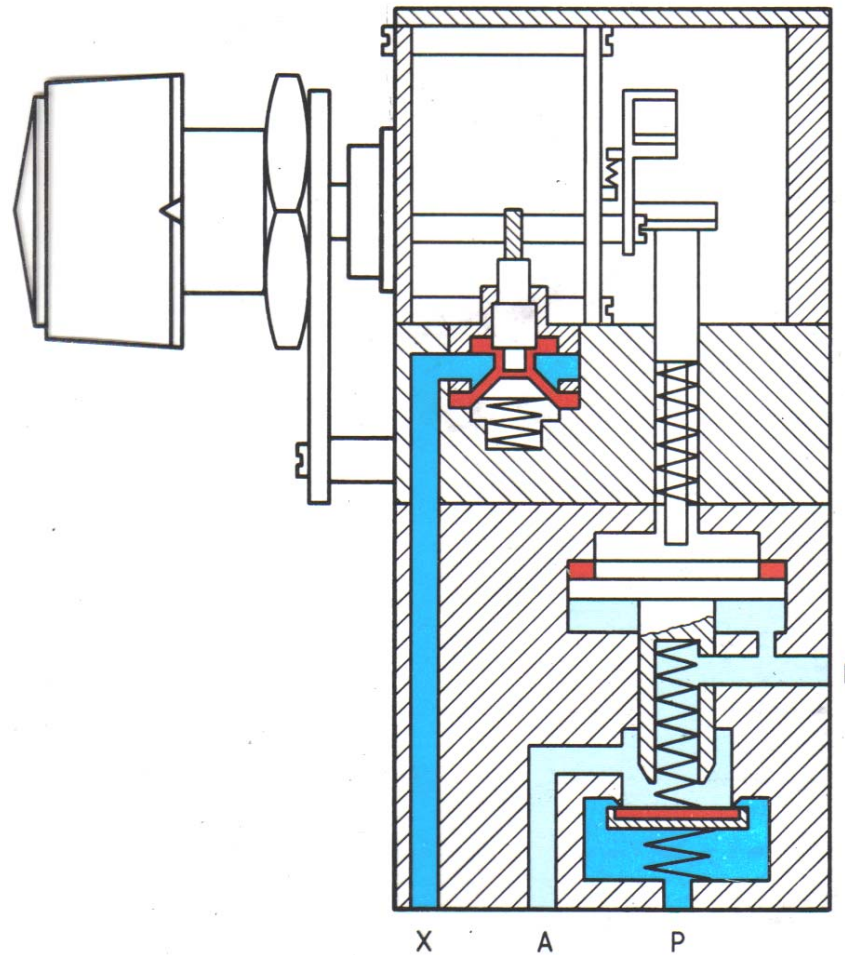
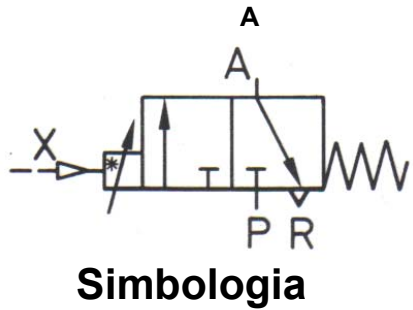


Simbologia

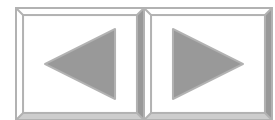


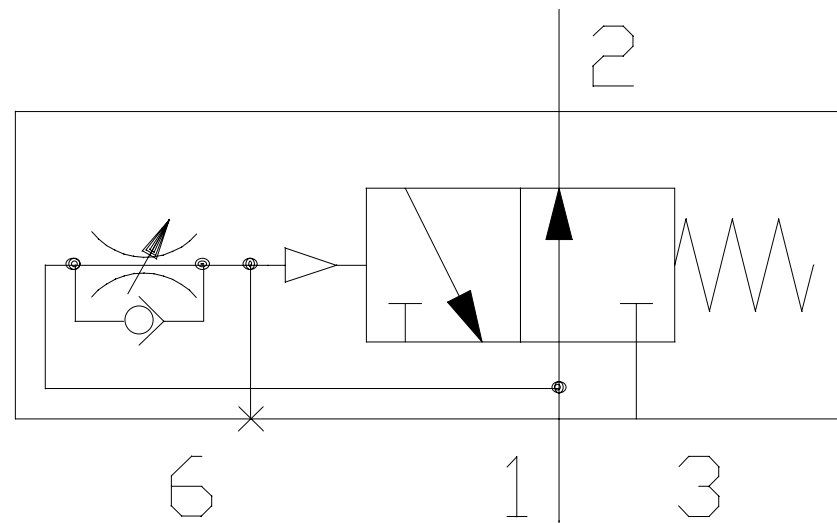
Temporizadora NA





Temporizador pneumomecânico





Corte de Sinal

